



# Classic

## ESL 9

**A MASTERPIECE OF DESIGN & ENGINEERING.** Distilling nearly forty years of innovative audio design and engineering into a startlingly fresh loudspeaker ideal.

MartinLogan unveils the Classic ESL 9, its newest modern Masterpiece. All the familiar elements of MartinLogan's flagship ESL series are here, with some revolutionary refinements. The heart of this exceptional loudspeaker is its 9.2-inch-wide XStat™ Curvilinear Line Source (CLS™) vacuum-bonded electrostatic transducer. Advanced MicroPerf stator technology reveals more of the diaphragm surface area than any other electrostatic panel in this size class, efficiently increasing the narrow panel's output. Ultra-rigid AirFrame Blade construction reduces performance-robbing vibrations, its shape creating an expressive alignment with the woofer cabinet. Deep bass is rendered with unflinching accuracy and authority by dual 8-inch low-distortion, high-excursion aluminum cone woofers in a beautifully sculpted enclosure.

### QUICK SPECS:

- 44" x 9.2" XStat™ CLS™ Transducer
- Dual 8-inch Aluminum Cone Woofers
- 34-23,000 Hz ±3dB Frequency Response
- Custom 5-Way Bi-Wire Binding Posts





### System Frequency Response

34–23,000 Hz  $\pm$  3db

### Recommended Amplifier Power

50–400 watts per channel at 4 Ohms

### Dispersion

Horizontal: 30 degrees

Vertical: 44-inch (112 cm) line source

### Sensitivity

90 dB / 2.83 volts / meter

### Impedance

Nominal: 4 ohms, 0.8 ohms @ 20 kHz

### Crossover Frequency

380 Hz

### High/Mid Frequency Driver

XStat CLS Electrostatic transducer

Panel dimensions: 44 x 9.2 inch (112 x 23.4 cm)

Radiating area: 405 in<sup>2</sup> (2,621 cm<sup>2</sup>)

### Woofers

2x 8" (20.3cm) cast basket, high excursion, rigid aluminum cone with extended throw drive assembly, non-resonance asymmetrical chamber format.

### Components

Custom-wound audio transformer, air core coils, low DCR steel laminate coils, polyester capacitors

### Signal Inputs

Custom 5-way bi-wire tool-less binding posts

### Power Draw

Max: 2W per channel

Standby: <1W per channel

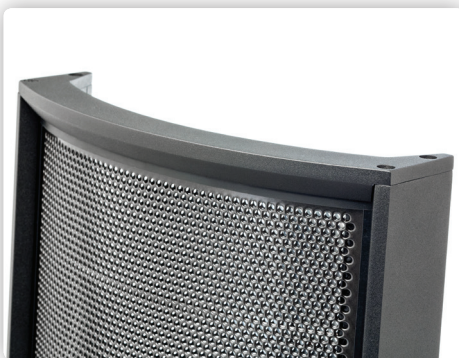
### Weight

78 lbs. each (35.4 kg)

### Size (H x W x D)

59.8 x 10.4 x 25.4-inch (152 x 26.4 x 64.6 cm)

*Specifications are subject to change without notice.*



### Finish Options:

